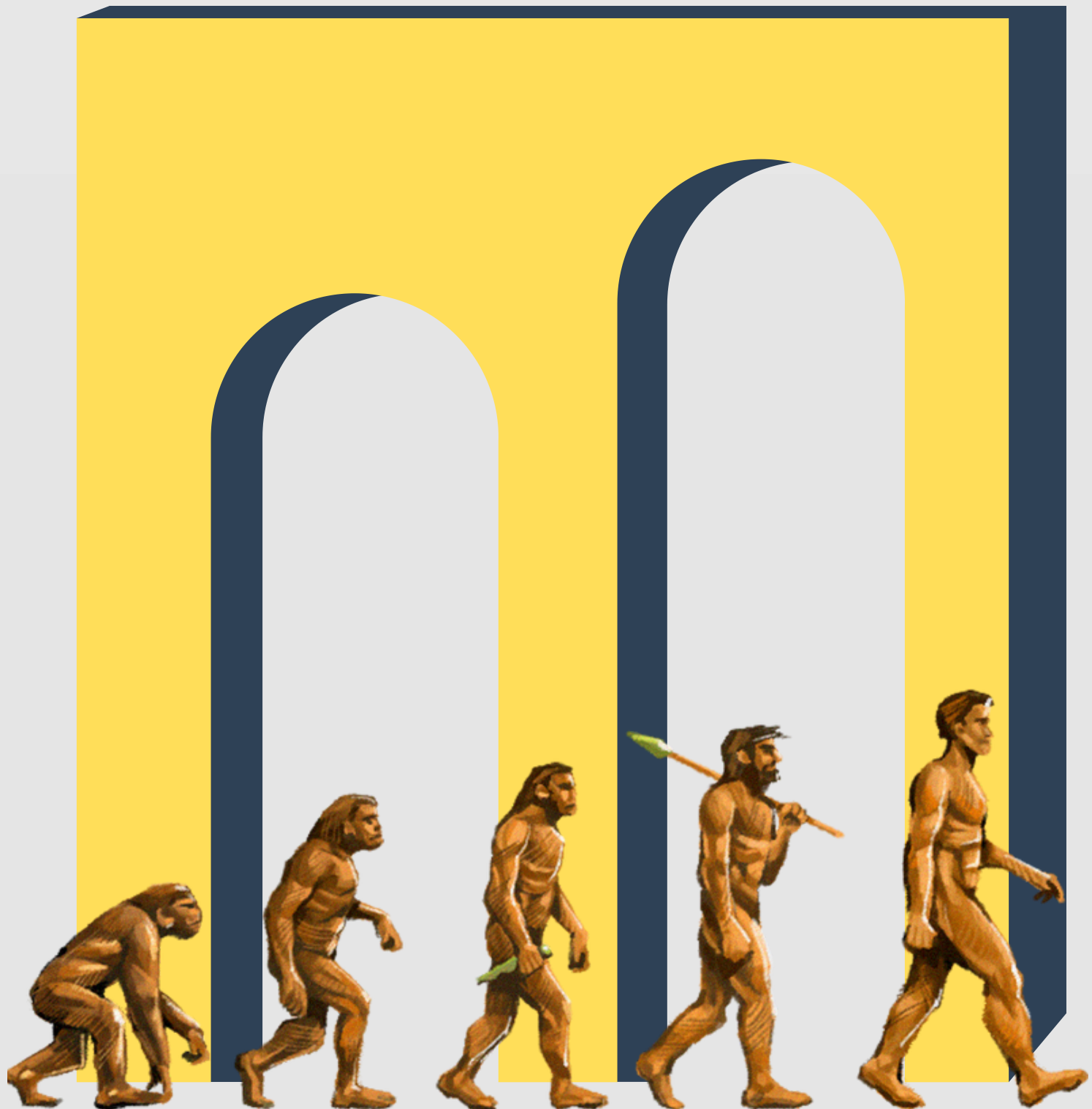


ASOIA

NEWSLETTER

2025 - 26



Volume I



CONTENT

PAGE **04**

Student's Highlights

PAGE **08**

Temple Architecture Study

PAGE **10**

City Sense of Vasai - Virar and
Mumbai region

PAGE **12**

Framing Strength, Shaping
Spaces

PAGE **14**

Workshop and Seminar

PAGE **16**

Material Matters

PAGE **17**

Faculty Corner

PAGE **18**

Miscellaneous



STUDENT'S HIGHLIGHTS

Design with Rhythm

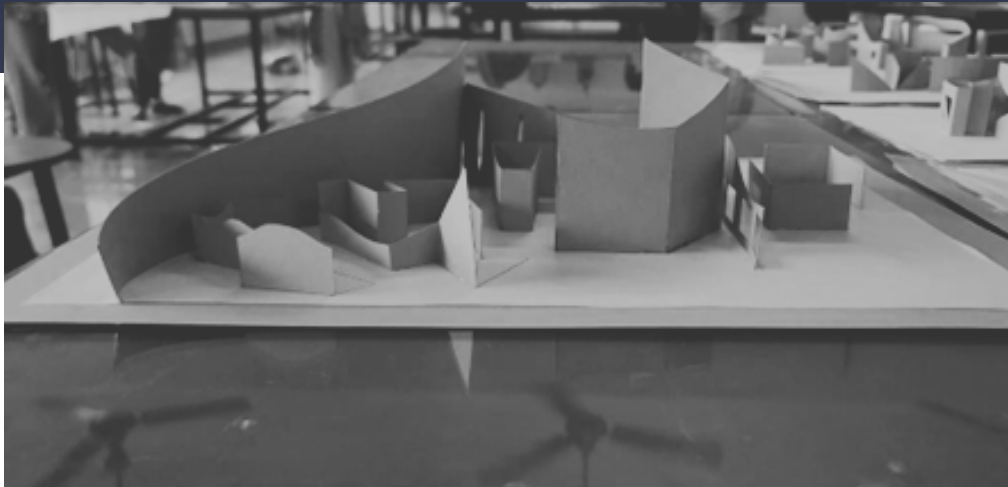
A creative workshop on form development through music was conducted for 2nd Year Diploma, 2nd Year B.Arch., and 3rd Year B.Arch. students. Titled **“Unfolding the Beats – From Rhythm to Space”**, the workshop aimed to move beyond conventional visual references and instead let rhythm and flow guide the design process.



Students listened to the sounds of instruments like the Flute and Tabla, with closed eyes, imagining how each rhythm might move through a space. These flows were sketched as dynamic lines, capturing the tempo and energy, which were then transformed into three-dimensional forms. The exercise helped translate auditory patterns into spatial concepts, making music an integral part of design thinking.

From Form to Function:

Translating Ideas into Architecture



The final part of the workshop involved translating our three-dimensional models into two-dimensional sketches, imagining how these abstract forms could be transformed into architectural structures. Through this process, we learned how observation, experimentation, and visualization work together in developing unique and functional designs. The workshop was not just about form making, but about training the mind to see design possibilities and beyond.



Design Critique

Session with Prof. Devyani Ghodke

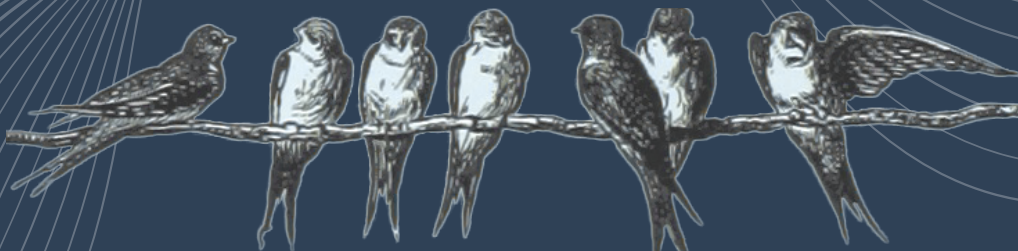
A design critique session was conducted with Ar. Devyani Ghodke Ma'am on our Youth Hostel with Co-working Space proposal. She shared valuable feedback on spatial organization, functionality, and user-focused planning, while stressing the balance between creativity and feasibility. The session guided us to refine our ideas into more practical and context-responsive solutions.



Beakwood Adobe



The 2nd-year architecture students recently spread their creative wings in the Sparrow India Birdhouse Competition. One team started with an ambitious idea—a birdhouse shaped like a sparrow's head, complete with its soft curves and graceful form. The choice of wood gave it a natural charm and durability, but the detailed head shape turned out to be a woodworking nightmare. Cuts were tricky, curves refused to cooperate, and the workshop saw more head-scratching than head-shaping. Instead of giving up, the team zoomed in on a simpler yet equally symbolic feature—the sparrow's beak. Sleek, sharp, and easy to craft, it captured the bird's essence without the technical headaches. With this new focus, prototyping was faster, details were cleaner, and the final birdhouse blended natural beauty with practical design.



Temple Architecture Study

As part of the temple competition, the 2nd and 3rd year Architecture students jointly conducted a case study on the Dwarkadheesh Temple, located beside our college. In this process, we had a meaningful discussion with the temple artisan, **Master Ar. Rajiv Mistry**, who shared his rich knowledge about traditional construction methods, intricate detailing, and the craftsmanship involved in temple architecture.



Temple Architecture Study

Students took part in a temple study involving a site visit where they observed and sketched the temple's architecture, noting key elements like the sanctum, mandapa, and the carvings. They documented cultural significance, materials, and construction techniques. Working as a team, they compiled their findings into a comprehensive study, gaining hands-on experience and deeper appreciation for traditional craftsmanship and temple design.



City Sense of Virar- Vasai and Mumbai region

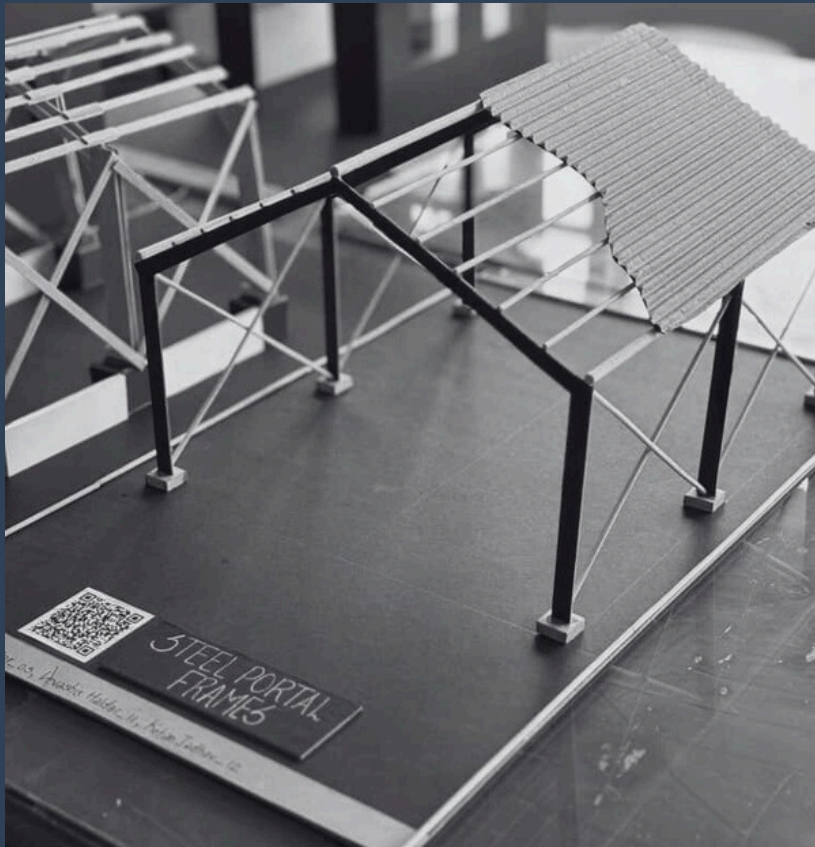


Through this hands-on exercise, students of 4th year and final year stepped beyond conventional mapping to trace and re-imagine the Vasai-Virar region. By overlaying street networks, natural edges, districts, nodes of activity and key landmarks, they decoded the city's hidden structure as described by Kevin Lynch in his seminal theory of Urban Design. This activity allowed them to experience how paths, edges, districts, nodes and landmarks together form the mental image of a city — transforming abstract theory into a living, visual narrative of our own urban environment.

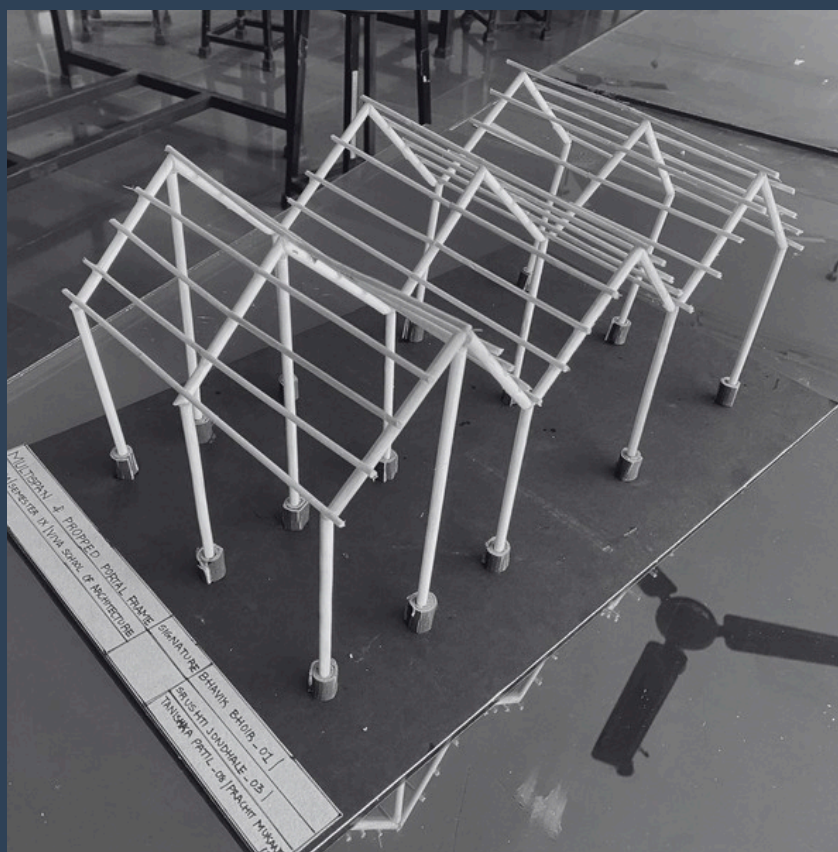
“Paths, edges districts, nodes
landmarks — the hidden DNA of our city
Students bring Kevin Lynch’s ideas to
life on the map.”



Framing Strength, Shaping Spaces



Our Architectural Building Construction studio transformed into a hands-on laboratory of making and learning. Through the Model-Making Studio, students explored the anatomy of structural systems, materials and joinery by physically constructing scaled models. This exercise moved beyond drawings to reveal how beams, columns, trusses, and portal frames actually come together in space.



By experimenting with different construction techniques at model scale, students gained a deeper understanding of load paths, detailing and the craft of building — bridging the gap between theoretical knowledge and real-world construction practice.”

WORKSHOP & SEMINAR



Day 1 – Shading & Radiation Analysis

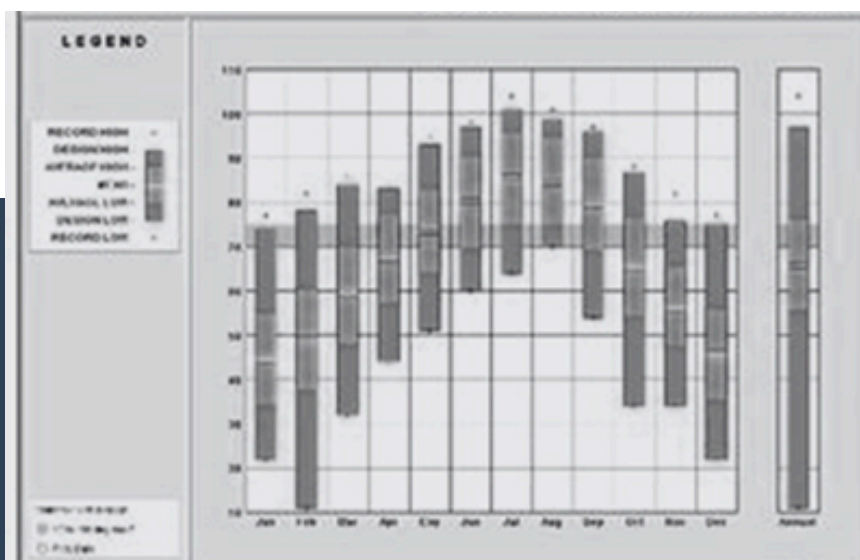
Students learned about shading and radiation analysis to optimise building design for thermal comfort and energy efficiency. Through simulations, they explored how solar radiation affects building form, envelope, and orientation, gaining insights into the benefits of passive design measures for long-term performance.



Climate-Responsive Design Workshop: Integrating Early Building Performance Analysis

In an era of growing environmental challenges, architects are shifting their focus from aesthetics to sustainability, placing it at the core of their practice. To equip students with practical tools for climate-conscious design, a three-day Climate-Responsive Design and Simulation Workshop was conducted by Ar. Deepa Parekh and her team from Kapadia Associates.

The workshop aimed to provide hands-on training in early building performance analysis, encouraging students to integrate climate-responsive strategies from the very beginning of the design process.



Day 2 – Climate Data & Passive Design Solutions

Using Climate Consultant software, students learned to interpret climate data and psychrometric charts to develop passive strategies such as natural ventilation, shading devices, and thermal massing. The session emphasised how early-stage design decisions can directly impact comfort, daylighting, and operational energy use.

Day 3 – Wind Flow Analysis & Application

The final day focused on wind flow analysis, highlighting its role in enhancing natural ventilation and reducing reliance on mechanical cooling. Students examined how wind dynamics interact with building form and site planning and explored strategies to optimise airflow for improved indoor comfort.

Material Matters

Seminar on ‘Material Matters’ Broadens Design Perspectives

A seminar titled Material Matters was conducted by Nayan Patel and Deepika Patel from Luxe Crafts Studio. The session introduced students to a range of materials used in design. Key topics included timber, plywood, veneer, laminates, MDF, and decorative materials. Discussions also covered the role of these materials in aesthetics and functionality. Sustainability in material selection was a major focus of the talk. Students explored textures, finishes, and design possibilities hands-on. The session highlighted how materials influence the overall design language. Practical insights were shared on combining materials creatively. The event inspired students to integrate sustainable choices in their future projects. It proved to be an enriching and insightful learning experience.



Prof. Devyani Ghodke



Reviving Ramkund: Conserving the Spirit of Heritage and Community

The sacred Ramkund Ghat in Nashik, along the banks of the river Godavari, is more than a landmark—it is the spiritual heart of the city. For centuries, it has welcomed pilgrims, with the Simhastha Kumbh Mela every 12 years drawing millions to its holy waters.

Over time, Ramkund's built fabric has grown into an organic architectural language temples, steps, and community spaces that foster deep interaction between people and place. Yet, rapid urban pressures have slowly diluted this character, leaving parts of its essence fading. This makes rejuvenation not just important, but essential. It is about safeguarding Ramkund's sacred identity while ensuring it continues to thrive as a cultural and community space for generations ahead.

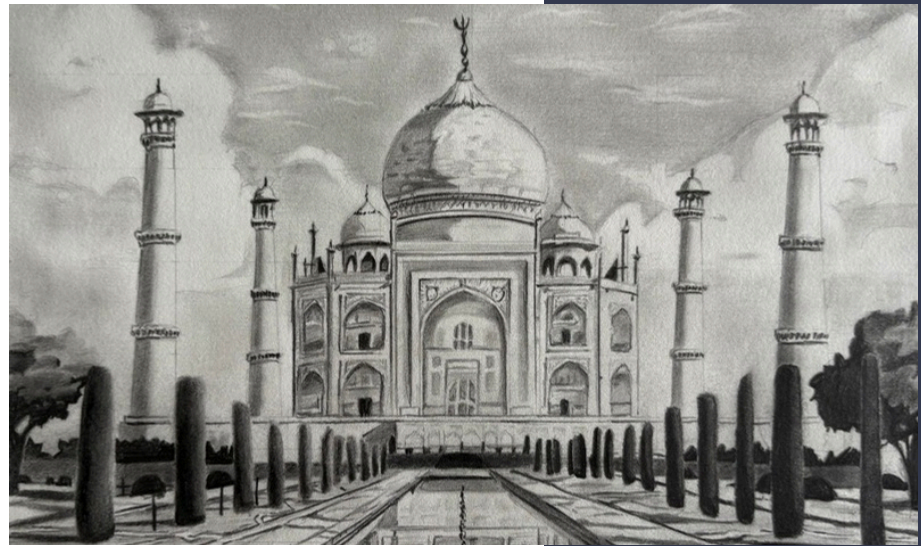
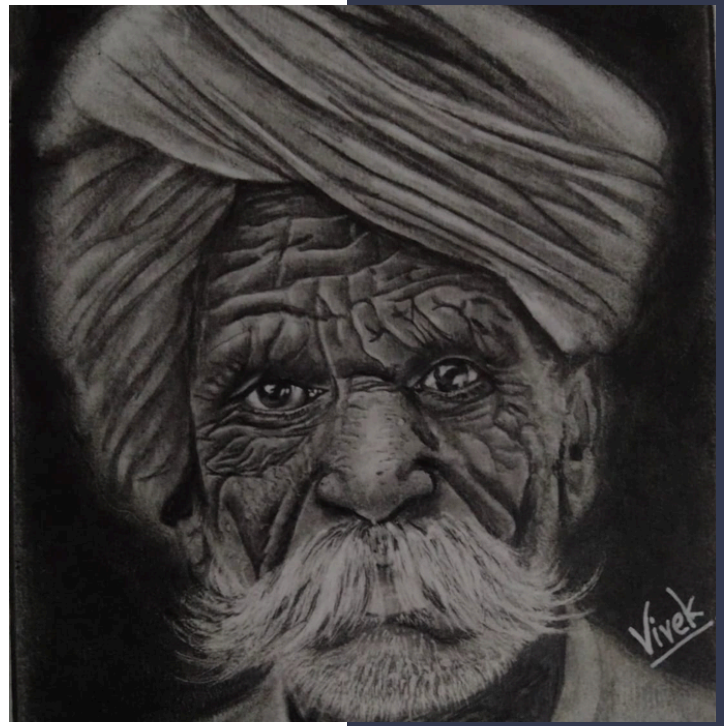
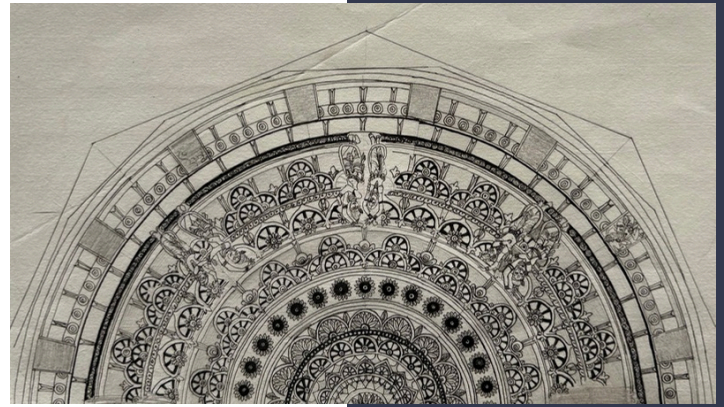
Prof. Vedant Mahajan

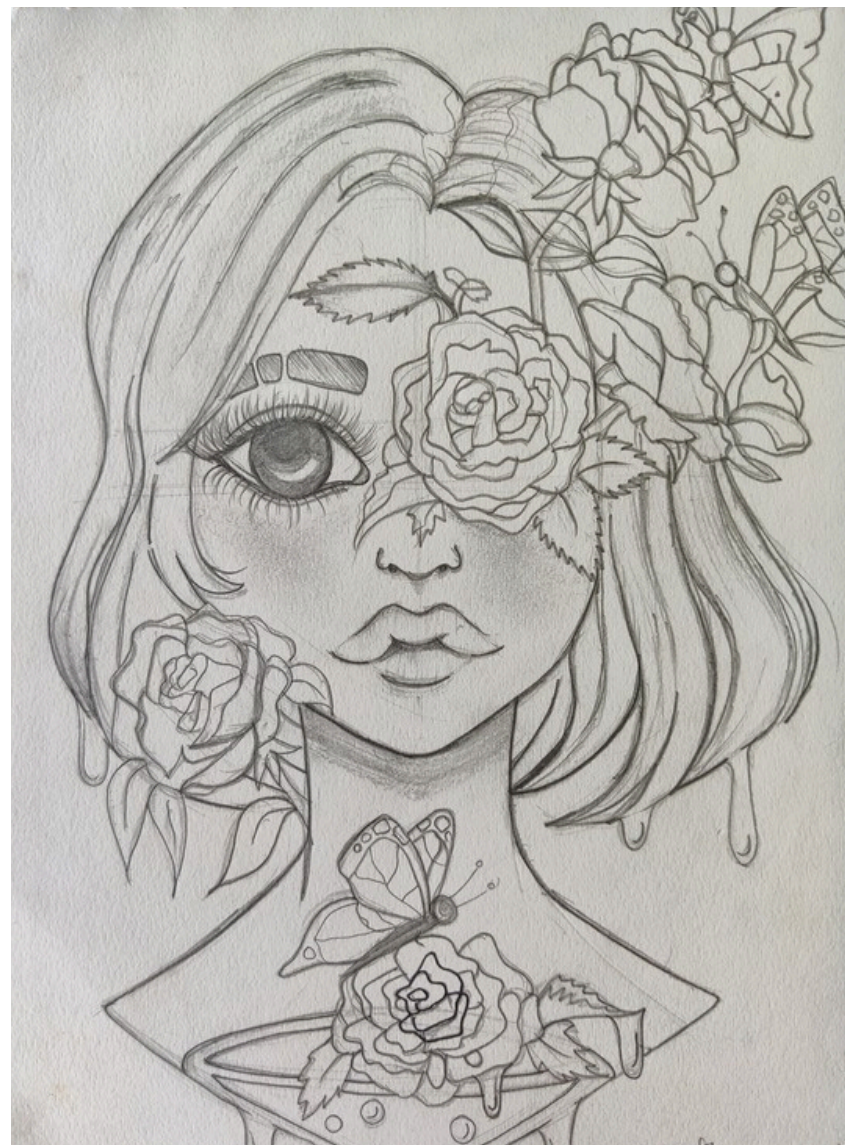
Reimagining the American landscape: Form-Based zoning as a solution to urban sprawl

The American landscape faces a critical challenge due to the dominance of urban sprawl—a pattern of poorly planned, low-density, auto-dependent development at the urban edge. This unchecked outward expansion, characterized by vast single-family

homes, strip malls, and heavy car reliance, exacts a heavy toll on our environment, communities, and quality of life. Urban sprawl consumes precious natural resources, including fertile farmland and forests, contributing to habitat fragmentation and reduced biodiversity









WOS

Editor's Note

As we wrap up this term at VIVA School of Architecture, it gives me immense joy to present this collection of works that reflect the creativity, hard work, and dedication of our students and faculty. This newsletter is more than just a record of events and activities—it is a glimpse into the vibrant journey of exploration, design, and learning that defines our college life.

Every article, model, sketch, and event featured here tells a story of growth, collaboration, and passion for architecture. From academic achievements and workshops to cultural celebrations and exhibitions, this term has been filled with moments that remind us of the power of ideas and the spirit of community.

On behalf of the editorial team, I extend my gratitude to all contributors who made this issue possible. May this serve not only as a reflection of what we have accomplished but also as an inspiration for the journeys yet to come.

— Literature Secretary,
VIVA School of Architecture

